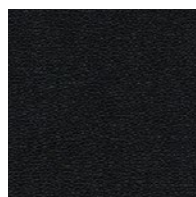


## TAPIZADO "U"

87% REVESTIMIENTO: PVC

5% SOPORTE: CO

8% SOPORTE: PES

GRUPO  
2

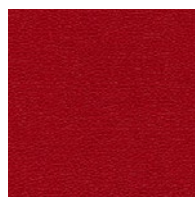
U12

10019



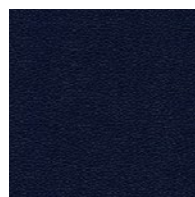
U14

01150



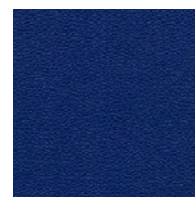
U15

02610



U17

02640



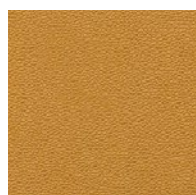
U19

02618



U20

U12



U21

04016



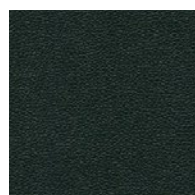
U22

09596



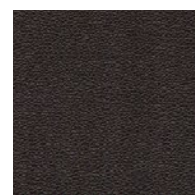
U23

09597



U24

02613



U25

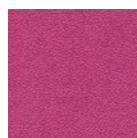
02608



U26

16811

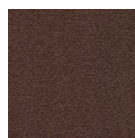
Actiu ofrece la posibilidad de solicitar toda la gama de colores que ofrece el fabricante de la calidad bajo condiciones específicas.

Pour demander une finition qui n'est pas incluse dans l'offre standard d'Actiu, veuillez consulter la **liste de prix des tapisseries** de cette liste de prix générale.

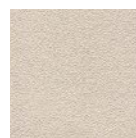
00497



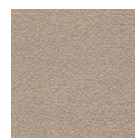
01150



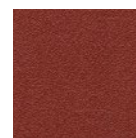
02270



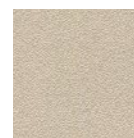
02578



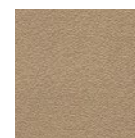
02581



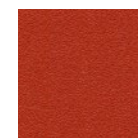
02583



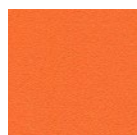
02597



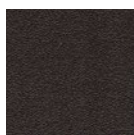
02598



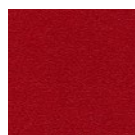
02604



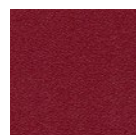
02607



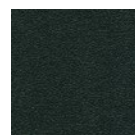
02608



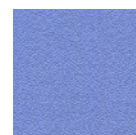
02610



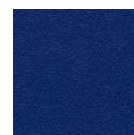
02612



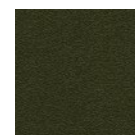
02613



02617



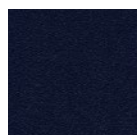
02618



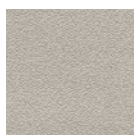
02638



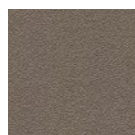
02639



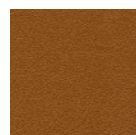
02640



02641



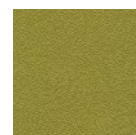
04011



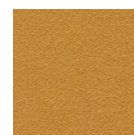
04012



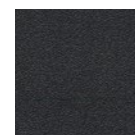
04013



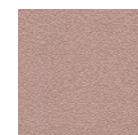
04015



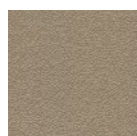
04016



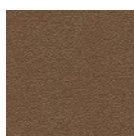
04017



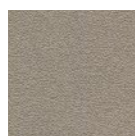
09593



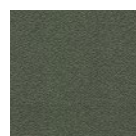
09594



09595



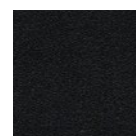
09596



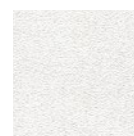
09597



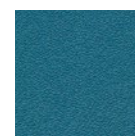
09598



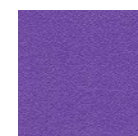
10019



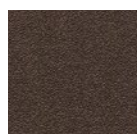
16811



16869



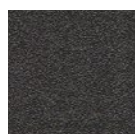
18919



55911



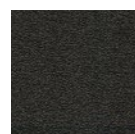
56390



56393



56403



56404





ESPECIFICACIONES TÉCNICAS TAPIZADO “U”

Composición	Revestimiento: PVC	87%
	Soporte: CO	5%
	Soporte: PES	8%
Peso	g/m² - DIN 53352	660
Ancho	cm	137 - 140
Thickness	mm	0,90 - 1,10
Resistencia a la Abrasión	ISO 5470-2 (Martindale cycles)	100.000
Limpieza	Frote suavemente con un paño húmedo o una esponja. No utilice productos con solventes.	
Inflamabilidad	EN1021 1&2	
	FMVSS302	
	UNI 9175 1.IM,	
	NF P 92-507 - M2	
	Reg. N 118: Annex 6,7	

Antibacterial / antifungal



Sujeto a posibles cambios y diferencias de color

En el caso de usar tapizados blancos o con colores muy claros, algunas prendas de vestir (en especial, aunque no únicamente, prendas oscuras y jeans) podrían transferir su color al tapizado. Estas circunstancias se dan más habitualmente en condiciones de humedad y temperaturas más altas, y resulta irreversible. ACTIU no se hace responsable de los daños sufridos por el cliente por este motivo.

ACTIU se reserva el derecho de llevar a cabo las modificaciones técnicas y referentes a medidas y acabados que estime convenientes. Se recomienda verificar cualquier material antes de tramitar un pedido.

